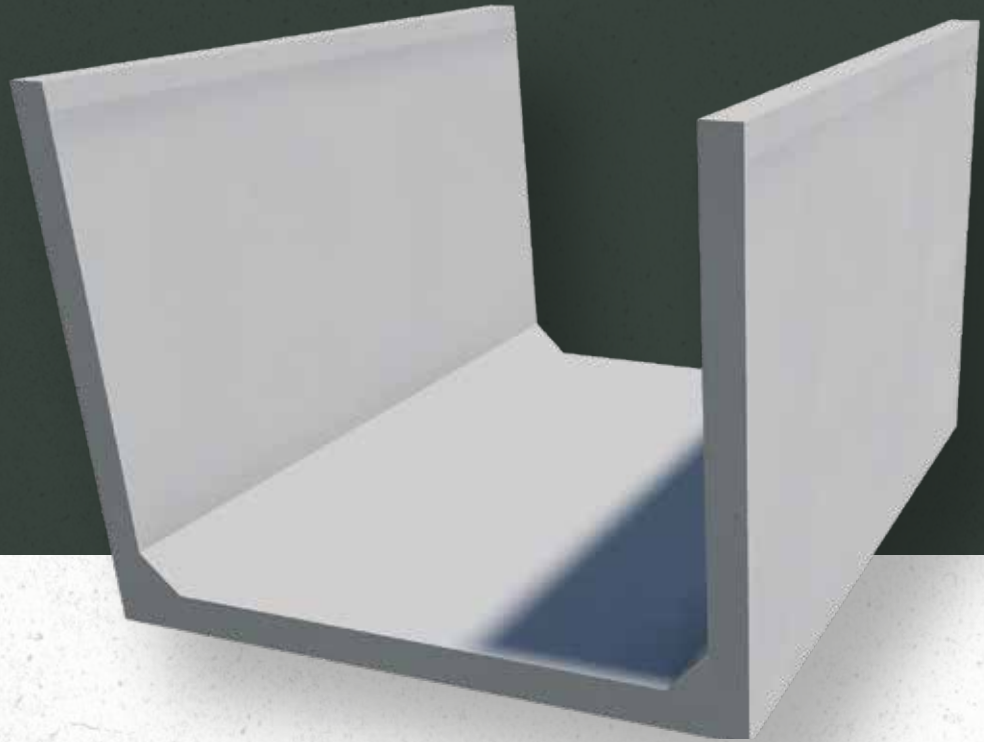


Vario Channel



*Illustration only

Purpose built to use alongside the Vario slat, this channel is optimised for slurry flow in scrape passages at the end of collecting yards, or cubicle buildings.

- ✓ Fits the Vario on perfectly.
- ✓ End panels available to block flow where not wanted.
- ✓ Intersections available to turn corners.
- ✓ Easy to install, reducing labour time.
- ✓ Smooth internal surface, bevelled corners, optimised for agricultural hygienic use.

Specifications

Dimensions

1460mm wide x 1200mm deep
x 2400mm long internally

Strength

50Kn high-strength concrete

Weight

2907kg

Standards

BS5502 part 50 & BS8110

Insert options



Standard option

- 40mm slots
- Grooved rubber for draining
- Used mainly for full grown dairy cattle



Multi-animal option

- 28mm slots
- Hammer top grip pattern
- Can be used for any smaller animal or calves (not pigs)



Solid rubber

- Hammer top grip pattern
- Ideal for multi-purpose buildings
 - suitable for grain or vehicle storage, equine use, or calving pens where full muck removal is preferred over drainage.



Urine option

- 10mm holes
- Hammer top grip pattern
- Ideal for use with a Lely Sphere, or in straw calving pens to reduce moisture.